

# 2019 CALENDAR



Empowered lives.  
Resilient nations.



European Union



**Vote blo iu, Voice blo iu**

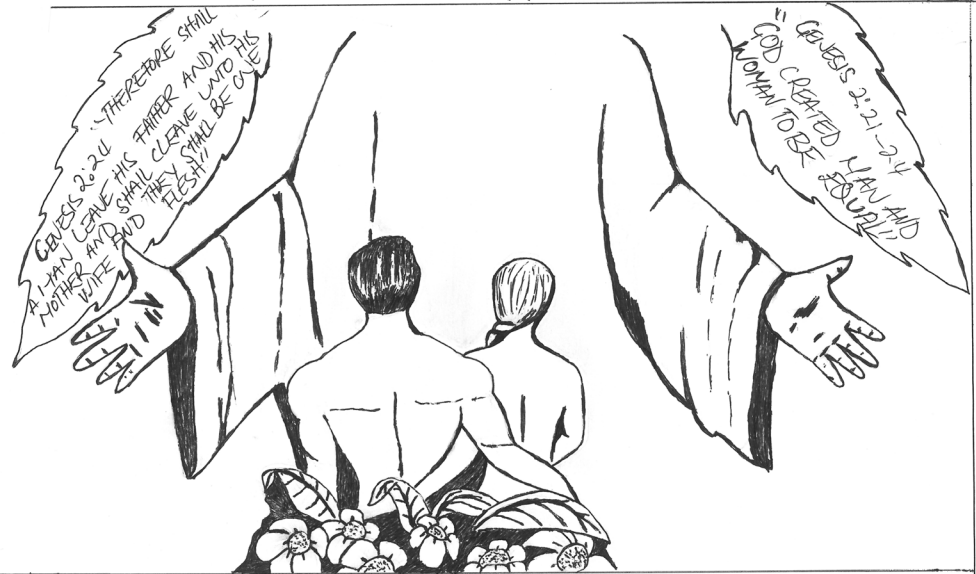


**Artwork by:**  
**Richard Ngatulu**  
Betikama Adventist College

Male Runner-up  
Category: Teacher  
2018



## 2 IMPORTANT KEY FACTORS OF TSM



1. Let's go back and look at the "CREATION STORY" "GENESIS 2:21-24"



2. Mothers' love are "TIMELESS AND UNIVERSAL"

HIGHLIGHT DATES

1 - New Years Day

2019  
JAN

SU MO TU WE TH FR SA

|    |    |    |    |    |    |    |
|----|----|----|----|----|----|----|
|    |    | 1  | 2  | 3  | 4  | 5  |
| 6  | 7  | 8  | 9  | 10 | 11 | 12 |
| 13 | 14 | 15 | 16 | 17 | 18 | 19 |
| 20 | 21 | 22 | 23 | 24 | 25 | 26 |
| 27 | 28 | 29 | 30 | 31 |    |    |

Custom

# Barriers & Solutions

Gender Inequality

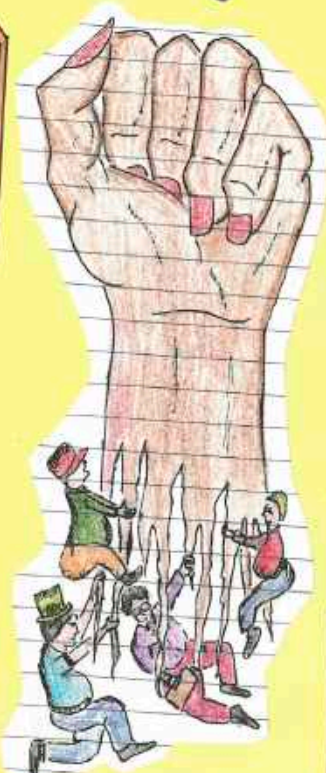


## Empowering women!



2nd Barrier

1st Barrier



- Women are Seen as inferior.
- Not Suitable to take up Senior government offices.
- Women are Seen as too emotionally Sensitive to hold such major roles.

## Solution

- Women should be respected equally as men.
- Women are good in management and are organised, which is what the government needs.
- Should reserve seats in Parliament for women.



- The lack of respect for women in a society for the role of being a leader is great, due to Culture and Custom

- According to the Malaysian Culture the duty of a woman is to take Care of the house-hold duties. (In other words a "house-wife")

## Solution:

We must Perceive equality of respect for or to the idea of women being able to lead and to provide more opportunities for our female race, for all women to be able to show their potential.

"Senior" FG BAC  
Name: Indere Howell  
Betikama Adventist College

Artwork by:

Indere Howell

Betikama Adventist College

Female Runner-up,

Category: Senior, 2018



## HIGHLIGHT DATES

**5** - Election Date Proclamation  
BY GOVERNOR GENERAL [section 53(8)]

## START OF ELECTORAL CAMPAIGN

**6** - Nominations Open

**12** Last Day of Delivery of  
Nomination Papers (Closed)  
[Sect.59]

Publishing of Ballot Paper  
Draw Notice [Sect.74 (2)(a)]

**20** Last Day of Delivery of  
Nomination Papers (Closed)  
[Sect.59]

Publishing of Ballot Paper  
Draw Notice [Sect.74 (2)(a)]

**21** Last Day of Checking Validity  
of Nomination Papers (Closed)  
[Sect.64 (1)(b)]

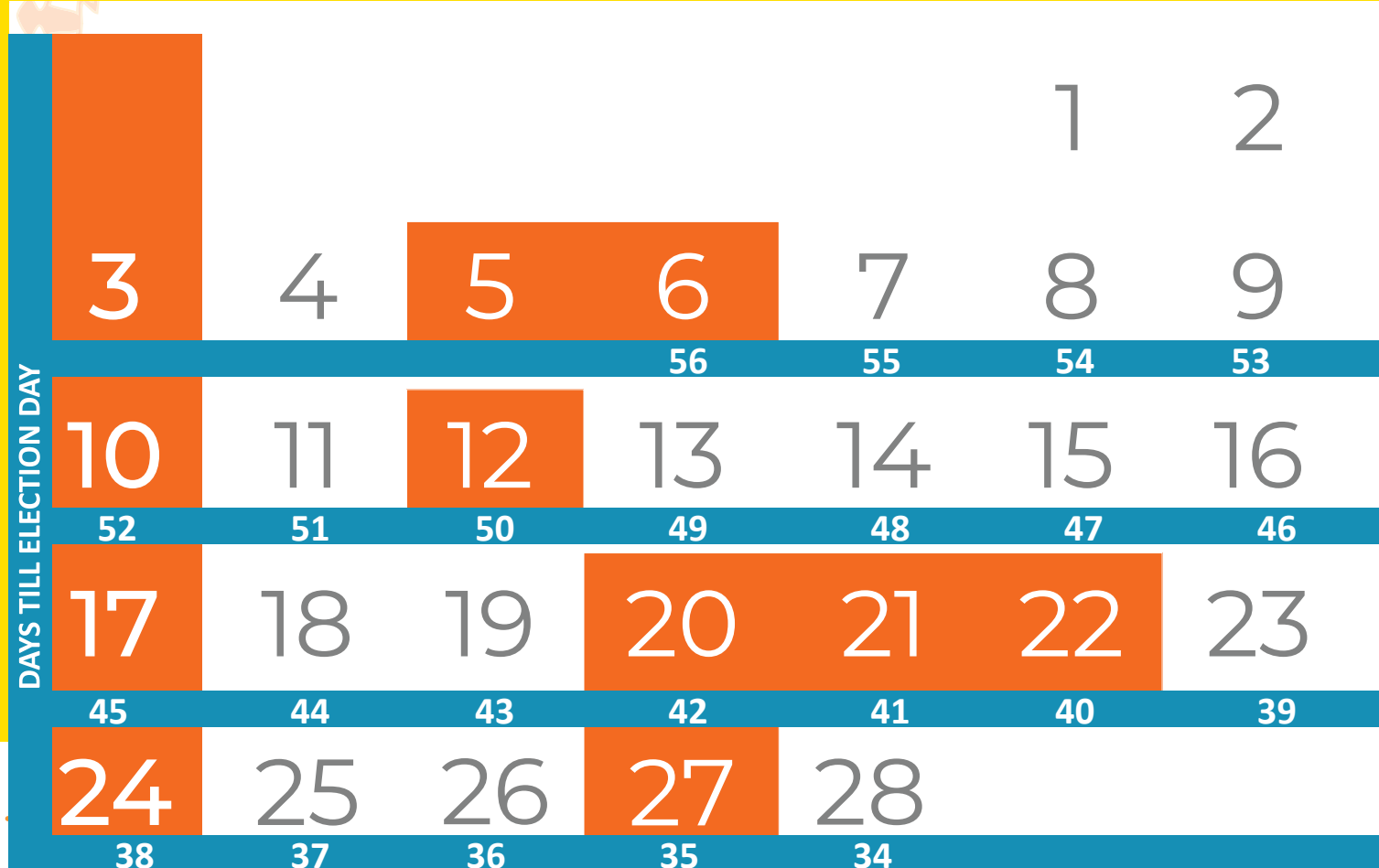
**22** Last Day of Withdrawal of  
Candidature [Sect. 66 (2)]

**27** Last Day for Ballot Paper Draw  
[Sect.74 (2)(a)]

# 2019

# FEB

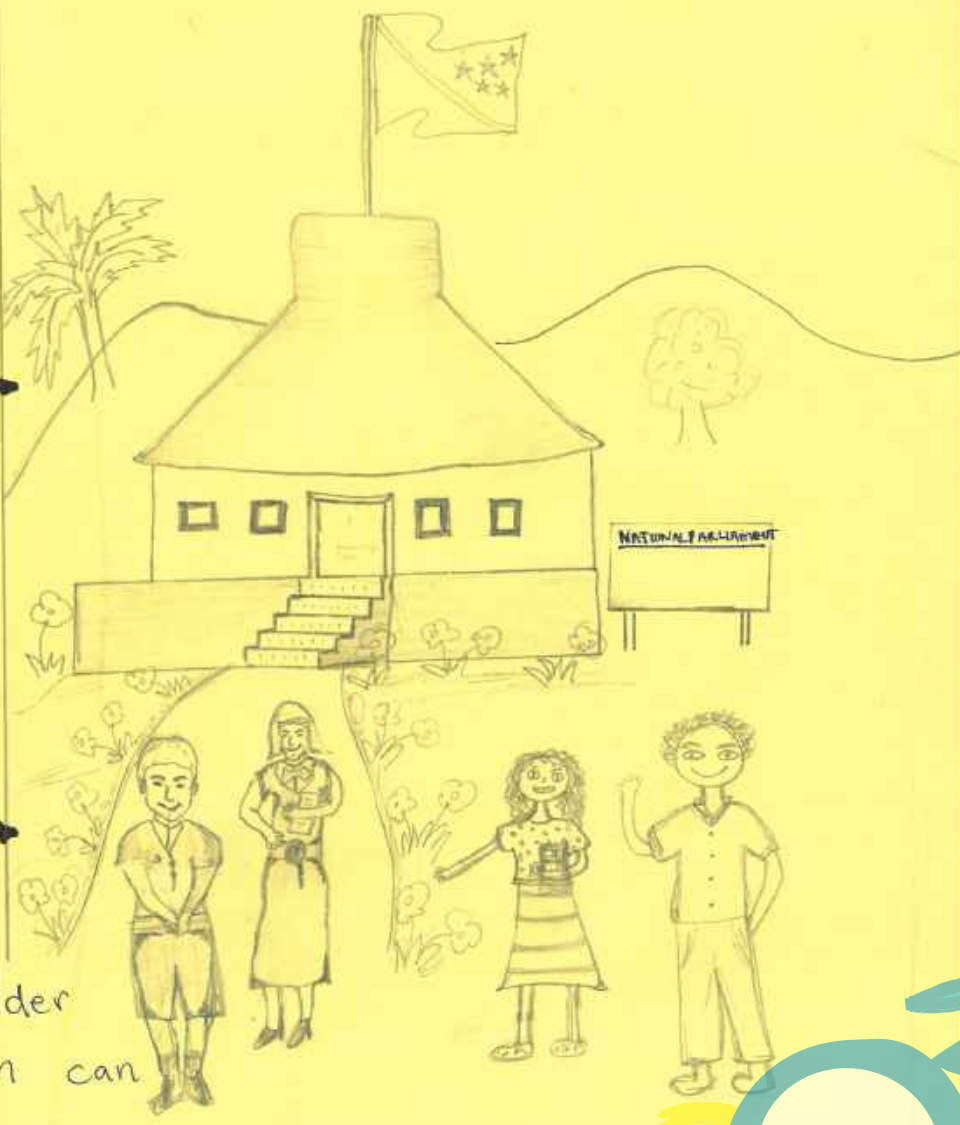
SU MO TU WE TH FR SA



From Classroom to Parliament!

Classroom Rules:  
1. Respect everyone  
2. No standing & kneeling before others

Chapter 4: Women and Leadership (Social Science)  
Women can become Leaders like men. A Leader is someone who has certain attributes, qualities to lead other people.  
In Politics, women can be elected as members of the national parliament so they can help make Laws and politics for their Countries.  
Women are also very Committed, compassionate...



Introducing Gender Issues, Gender Balance, Gender Equality in the Primary + Secondary Curriculum can help girls make wise and better informed choices in the future!..



Artwork by:

Sarah Houkura

Tuvaruhu Community High School

Female Overall Winner  
Category: Teacher, 2018



## HIGHLIGHT DATES

- 8** - International Women's Day
- 20** - Notice informing electorate of candidates and nominators details and locations of polling stations  
Returning Officer's Notice of Election [Sect. 72]

2019  
MAR

SU MO TU WE TH FR SA

**24** Last Day of Appointing Counting Agents and Polling Agents [Sect. 68 (1)]

|  | SU         | MO | TU | WE | TH | FR | SA |
|--|------------|----|----|----|----|----|----|
|  |            |    |    |    |    | 1  | 2  |
|  |            |    |    |    |    | 33 | 32 |
|  | 3          | 4  | 5  | 6  | 7  | 8  | 9  |
|  | 31         | 30 | 29 | 28 | 27 | 26 | 25 |
|  | 10         | 11 | 12 | 13 | 14 | 15 | 16 |
|  | 24         | 23 | 22 | 21 | 20 | 19 | 18 |
|  | 17         | 18 | 19 | 20 | 21 | 22 | 23 |
|  | 17         | 16 | 15 | 14 | 13 | 12 | 11 |
|  | 24<br>/ 31 | 25 | 26 | 27 | 28 | 29 | 30 |
|  | 10/3       | 9  | 8  | 7  | 6  | 5  | 4  |

DAYS TILL ELECTION DAY



*Artwork by:*  
**Jayleen R Qoqonokana**  
King George V

*Female Runner-up*  
*Category: Junior*  
**2018**





## HIGHLIGHT DATES

**1 - Last Day of Electoral Campaign**

Ends at Midnight - [Sect.62]

**3 - ELECTION DAY**

2019  
APR

SU MO TU WE TH FR SA

### POST ELECTION DAY:

Once counting is completed, the Returning Officer declares the elected candidate and notifies the results to the Electoral Commission.

The Electoral Commission will send a copy of this notice to the Governor General and the Clerk of Parliament and as soon as practicable, the results will be published in the Gazette.

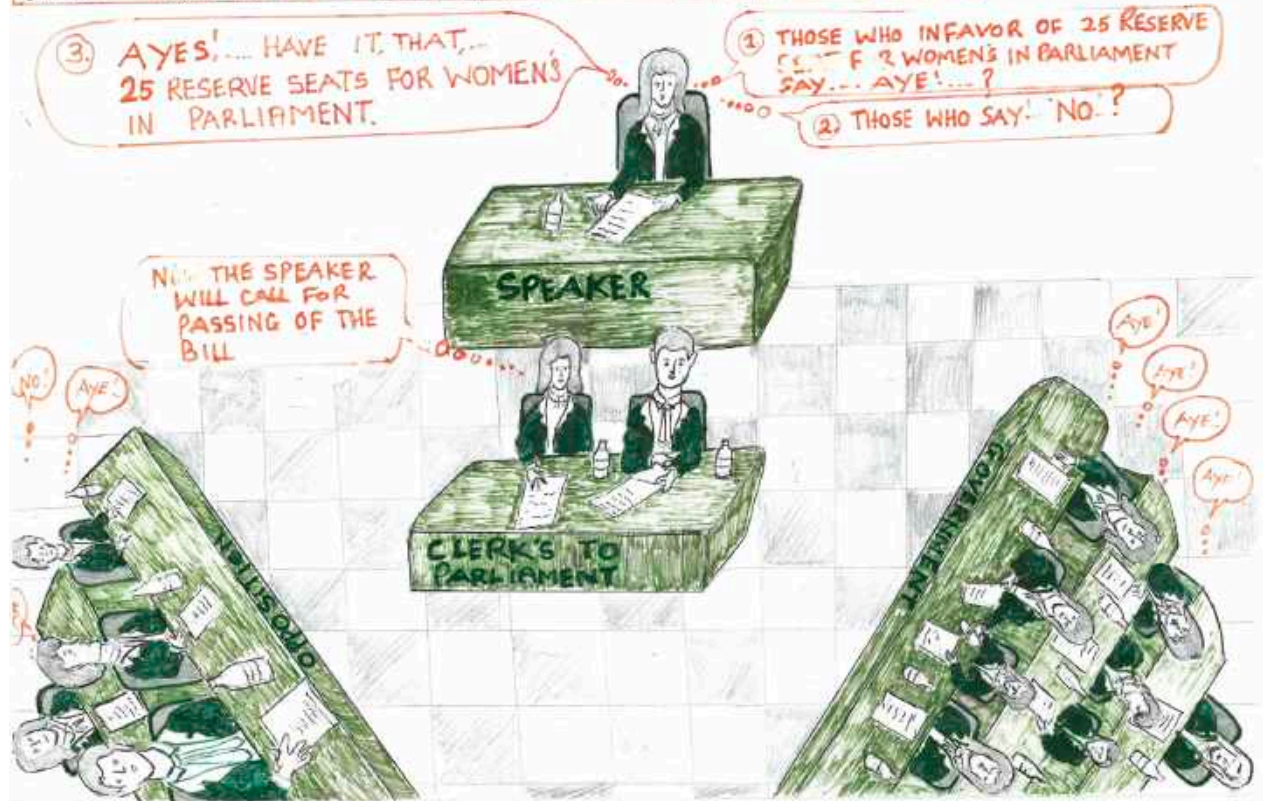
| DAYS TILL ELECTION DAY | SU | MO | TU | WE                | TH | FR | SA |
|------------------------|----|----|----|-------------------|----|----|----|
|                        |    | 1  | 2  | 3<br>ELECTION DAY | 4  | 5  | 6  |
| 7                      |    | 8  | 9  | 10                | 11 | 11 | 13 |
| 14                     |    | 15 | 16 | 17                | 18 | 19 | 20 |
| 21                     |    | 22 | 23 | 24                | 25 | 26 | 27 |
| 28                     |    | 29 | 30 |                   |    |    |    |

Artwork by:  
**Samuel Hou**  
 Sarawasi Community  
 High School

Male Overall Winner  
 Category: Teacher  
 2018



**TITLE: PASSING ACT FOR MORE WOMEN'S IN PARLIAMENT**



(NAME: SAMUEL HOU)

2.

**VOTE MORE WOMEN'S IN PARLIAMENT**

- Change Electoral Voting System for one voter, can vote for two(2) or three(3) Candidates at one time.

**WOMAN CANDIDATE.**

1. MARY  Symbol
2. JOYCE  "



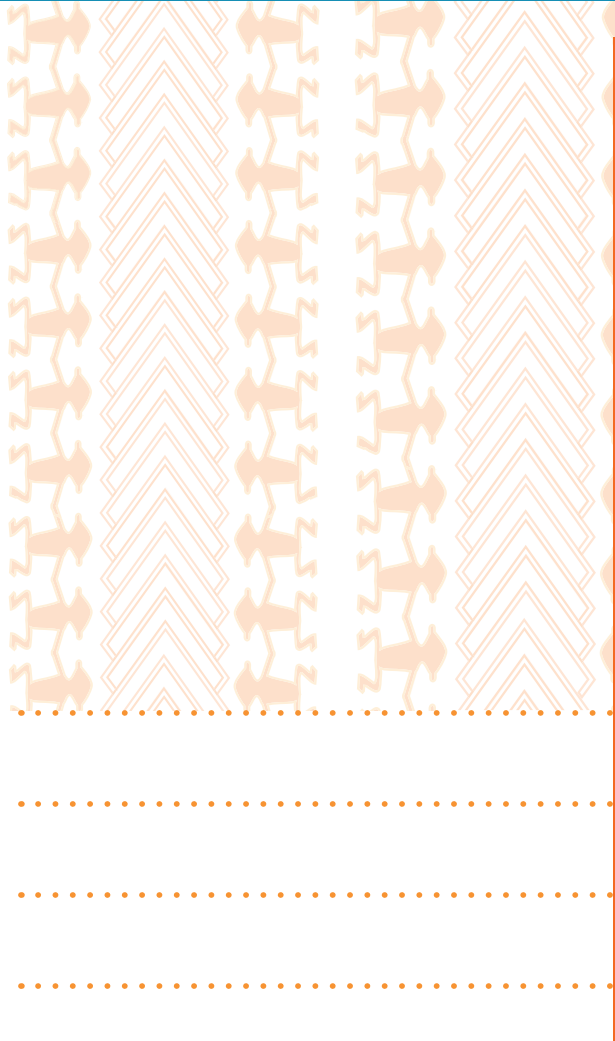
HIGHLIGHT DATES

- 1 - International Labor Day
- 3 - World Press Freedom Day

2019

MAY

SU MO TU WE TH FR SA



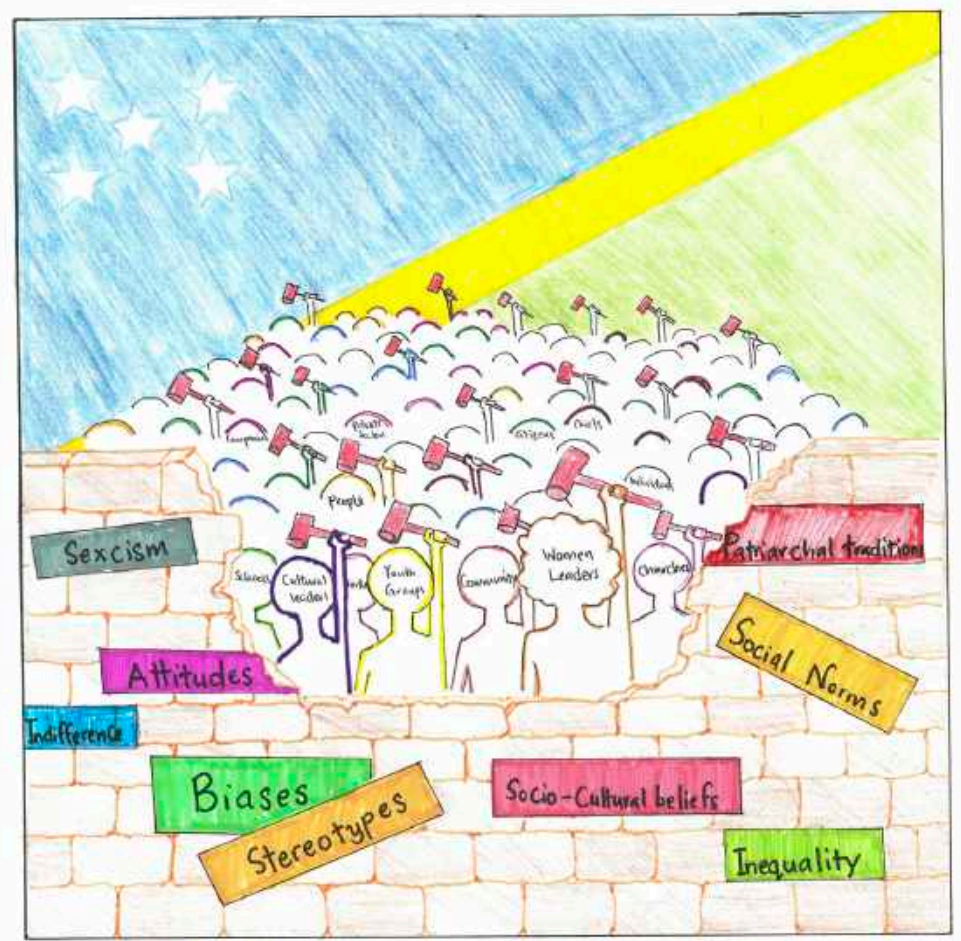
|    |    |    |    |    |    |    |
|----|----|----|----|----|----|----|
|    |    |    | 1  | 2  | 3  | 4  |
| 5  | 6  | 7  | 8  | 9  | 10 | 11 |
| 12 | 13 | 14 | 15 | 16 | 17 | 18 |
| 19 | 20 | 21 | 22 | 23 | 24 | 25 |
| 26 | 27 | 28 | 29 | 30 | 31 |    |



*Artwork by:*  
**Rowena Morgan**  
 King George VI

*Female Overall Winner*  
 Category: Senior  
 2018

# BREAKING BARRIERS



# BREAK A BARRIER RAISE A NATION.

HIGHLIGHT DATES

12 - World Day Against Child Labour

14 - Queen's Birthday

2019  
JUN

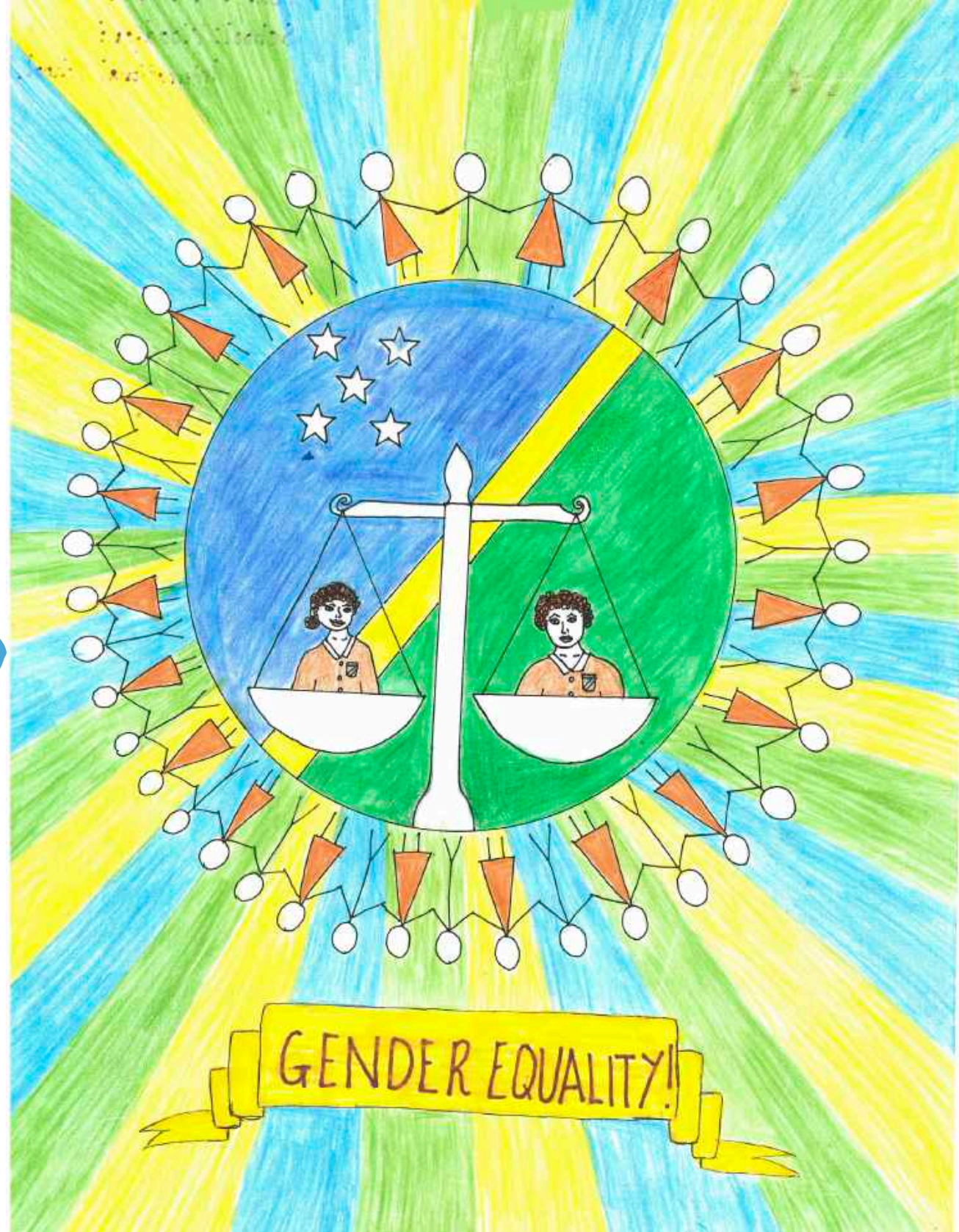
SU MO TU WE TH FR SA

| SU         | MO | TU | WE | TH | FR | SA |
|------------|----|----|----|----|----|----|
|            |    |    |    |    |    | 1  |
| 2          | 3  | 4  | 5  | 6  | 7  | 8  |
| 9          | 10 | 11 | 12 | 13 | 14 | 15 |
| 16         | 17 | 18 | 19 | 20 | 21 | 22 |
| 23<br>/ 30 | 24 | 25 | 26 | 27 | 28 | 29 |



**Artwork by:**  
**Danielle Baura**  
Woodford International School

*Female Overall Winner*  
*Category: Junior*  
**2018**



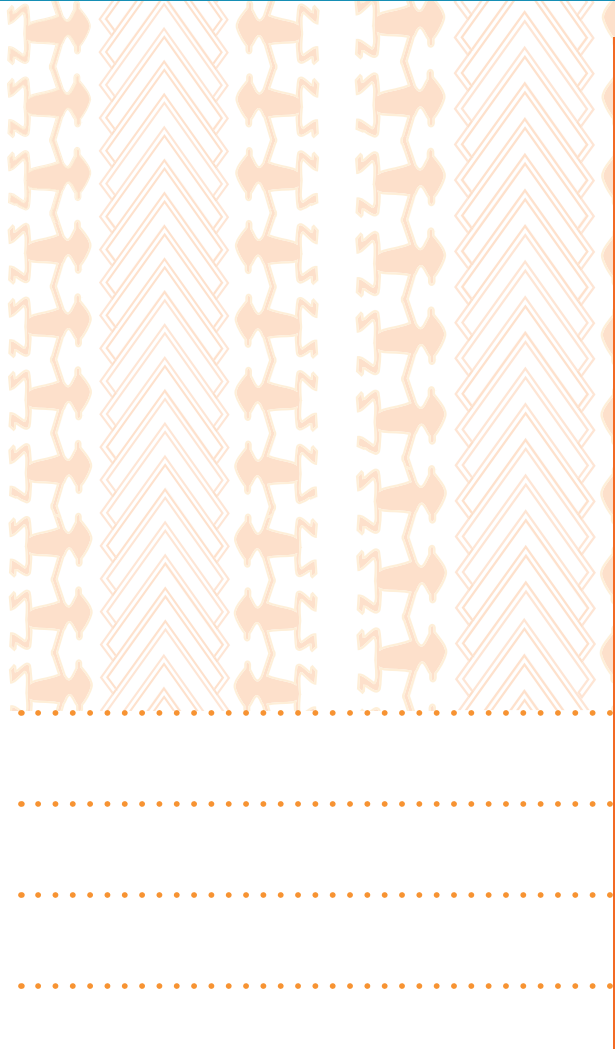
HIGHLIGHT DATES

7 - Independence Day  
Solomon Islands (41st Anniversary)

2019

JUL

SU MO TU WE TH FR SA

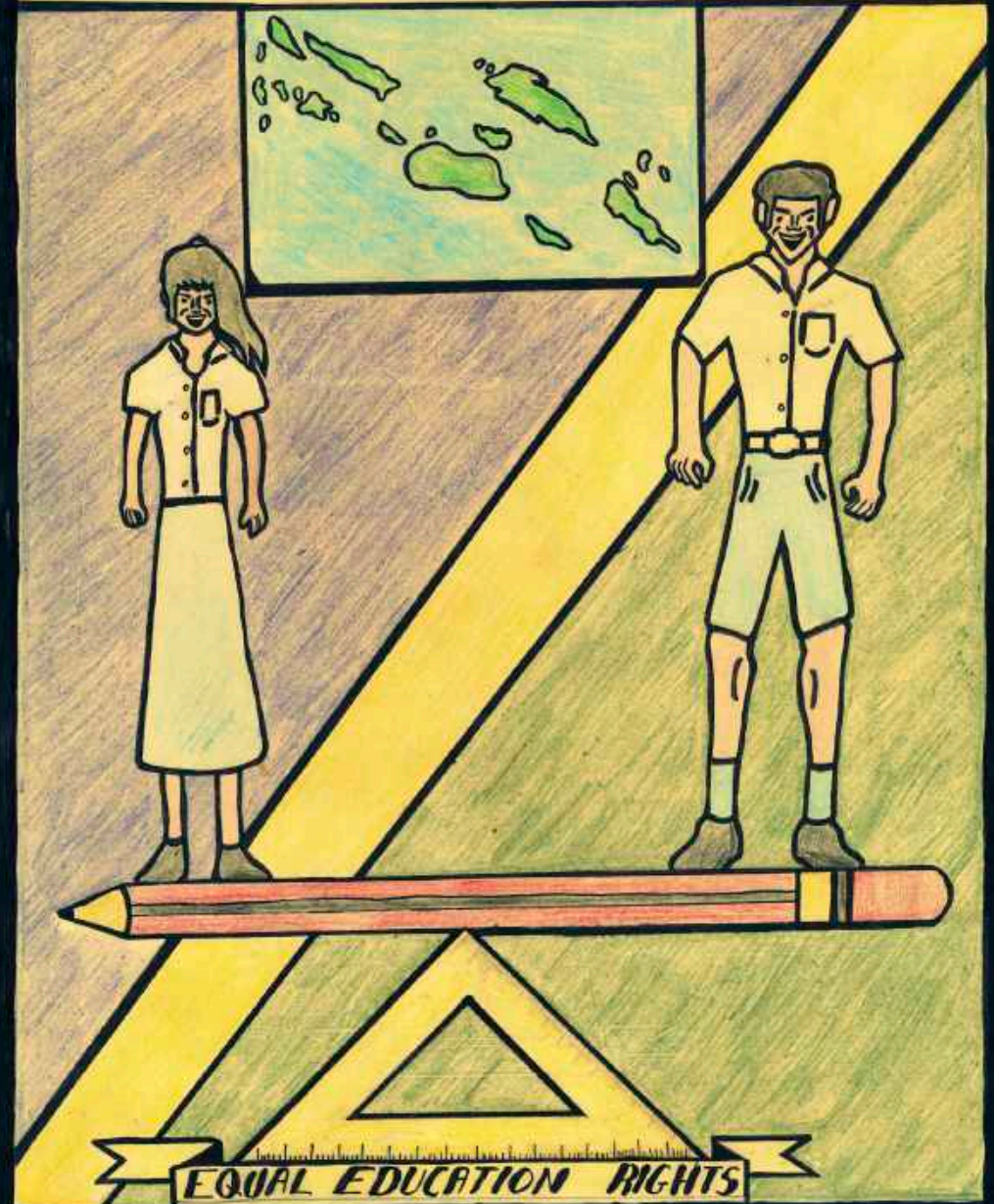


| SU | MO | TU | WE | TH | FR | SA |
|----|----|----|----|----|----|----|
|    | 1  | 2  | 3  | 4  | 5  | 6  |
| 7  | 8  | 9  | 10 | 11 | 12 | 13 |
| 14 | 15 | 16 | 17 | 18 | 19 | 20 |
| 21 | 22 | 23 | 24 | 25 | 26 | 27 |
| 28 | 29 | 30 | 31 |    |    |    |

*Artwork by:*  
**Philemon Akao**  
Bishop Epalle

*Male Overall Winner*  
*Category: Junior*  
**2018**

# GENDER EQUALITY IN SCHOOL





HIGHLIGHT DATES

19 - World Humanitarian Day

2019  
AUG

SU MO TU WE TH FR SA

| SU | MO | TU | WE | TH | FR | SA |
|----|----|----|----|----|----|----|
|    |    |    |    | 1  | 2  | 3  |
| 4  | 5  | 6  | 7  | 8  | 9  | 10 |
| 11 | 12 | 13 | 14 | 15 | 16 | 17 |
| 18 | 19 | 20 | 21 | 22 | 23 | 24 |
| 25 | 26 | 27 | 28 | 29 | 30 | 31 |

# Barriers And Solutions To Increase Women Leadership

## Barriers

- Our political leaders have the mentality that only men can climb up the balcony of leadership



- It is customary for men to be Leaders
- Their Decisions is one of the main Barriers on womens path towards Leadership.



DONT BE A BARRIER ON WOMENS PATH TOWARDS LEADERSHIP

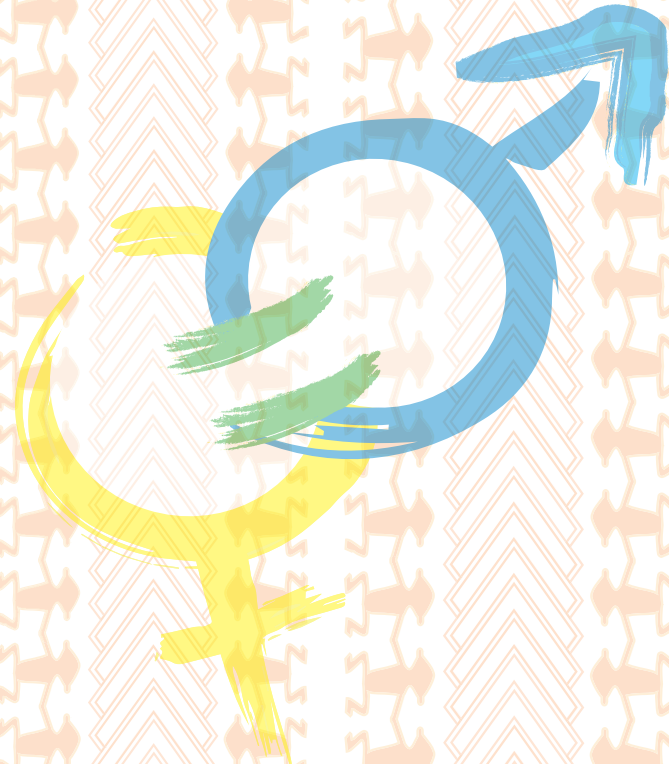
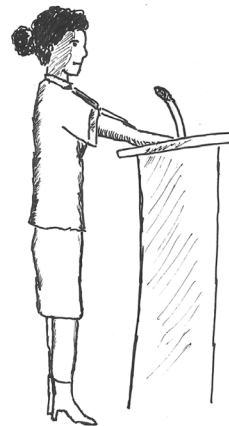
## Solution

ENCOURAGE AND SELECT WOMAN INTO LEADERSHIP ROLE

- Give opportunities for women to talk about politics in parliament.

• leadership is a shared responsibility

- Women are capable to undertake the responsibilities that is placed on them.



**Artwork by:  
Shaun Belo**

Florence Young Christian School

Male Runner-Up  
Category: Senior  
2018



HIGHLIGHT DATES

15 - International Day of Democracy

21 - International Day of Peace

2019  
SEP

SU MO TU WE TH FR SA

1

2

3

4

5

6

7

8

9

10

11

12

13

14

15

16

17

18

19

20

21

22

23

24

25

26

27

28

29

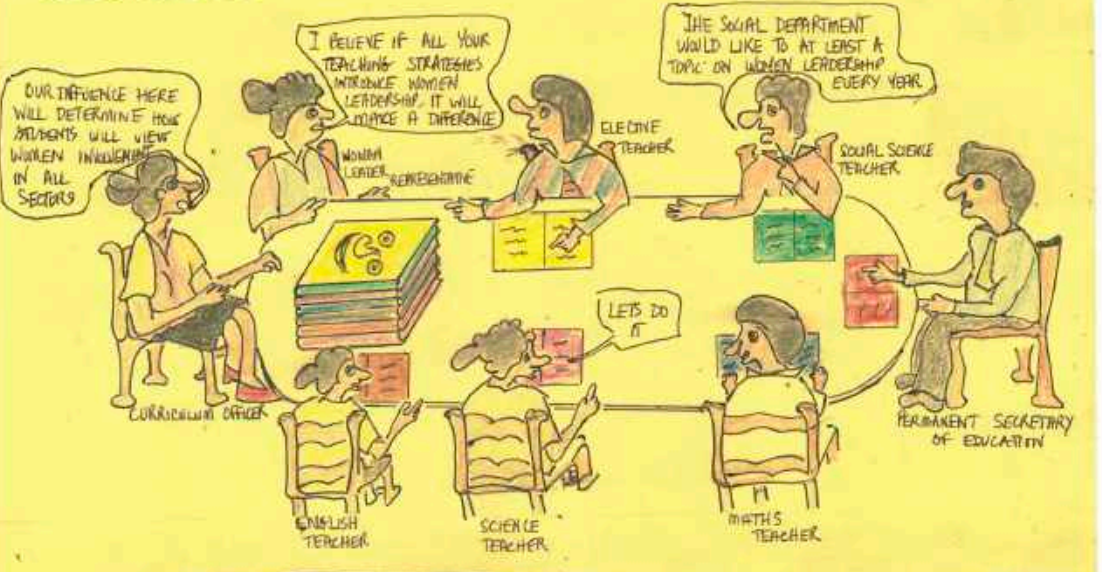
30

**TOPIC\*** WOMEN LEADERSHIP EMPHASIS IN A REVISED CURRICULUM IS A WAY FORWARD FOR SOLOMON ISLAND

**PROBLEM**



**SOLUTION**



WHEN YOU TEACH A STUDENT, YOU TEACH A PEER, A HOUSEHOLD, THE COMMUNITY, THE PROVINCE, THE WORLD.



**Artwork by:**  
**Karen Paul**  
 Jones Adventist College

*Female Runner-up*  
 Category: Teacher  
 2018

HIGHLIGHT DATES

- 2 - International Day of Non-Violence
- 13 - International Day for Disaster Reduction

2019  
OCT

SU MO TU WE TH FR SA

|    |    |    |    |    |    |    |
|----|----|----|----|----|----|----|
|    |    | 1  | 2  | 3  | 4  | 5  |
| 6  | 7  | 8  | 9  | 10 | 11 | 12 |
| 13 | 14 | 15 | 16 | 17 | 18 | 19 |
| 20 | 21 | 22 | 23 | 24 | 25 | 26 |
| 27 | 28 | 29 | 30 | 31 |    |    |



**Artwork by:**  
**John Garo Junior**  
Bishop Epalle

*Male Overall Winner*  
*Category: Senior*  
**2018**



GENDER  
50♂

BALANCE  
50♀



I can Lead Well.

I can Serve Well.

TO LEAD

IS TO SERVE

EQUALITY = QUALITY

HIGHLIGHT DATES

2 - International Day to End Impunity for Crimes against Journalists

25 - International Day for the Elimination of Violence against Women

2019

NOV

SU MO TU WE TH FR SA

1 2

3 4 5 6 7 8 9

10 11 12 13 14 15 16

17 18 19 20 21 22 23

24 25 26 27 28 29 30

# RESPECT

Hello, My Name is Jnr. Malachi Sore  
I am doing my Year 8 in Betikama  
Adventist College. On my opinion  
The key elements to achieving Gender  
equality in Solomon Island  
Schools are.

**Respect**  
**Trust** Because if we want  
Gender equality we must Respect  
each other and treat each other  
like brothers and sisters we  
Must trust each other too.  
See each others ability and trust  
each other So if You Respect &  
Trust each other we will  
have **Gender Equality** in our  
Schools.



Trust leads to  
Success  
Respect leads to  
Unity.

Respect  
and  
Trust each  
Other

If You  
Want  
To gain  
Respect  
Trust  
You have  
to Give  
Respect  
and  
Trust

Wise People Trust  
and Respect each  
Other

Artwork by:

**Malachi Sore Junior**  
Betikama Adventist College

Male Runner-Up  
Category: Junior, 2018



HIGHLIGHT DATES

- 10 - Human Rights Day
- 20 - International Human Solidarity Day
- 25 - Christmas Day

2019  
DEC

SU MO TU WE TH FR SA

1

2

3

4

5

6

7

8

9

10

11

12

13

14

15

16

17

18

19

20

21

22

23

24

25

26

27

28

29

30

31



As part of UNDP’s support to encourage women’s leadership and political participation, the UNDP “Strengthening the Electoral Cycle in the Solomon Islands Project (SECSIP) supported the partnership between the Solomon Islands Electoral Commission (SIEC) and the Ministry of Education and Human Resources Development (MEHRD) to launch a ‘Poster and Essay Competition on Women’s Political Participation’.

The competition was conceived as a way to raise awareness on issues relating to women’s leadership and political participation and to provide an avenue for the expression of ideas through essays or artwork from secondary school students and teachers in the Solomon Islands. The artwork featured in this calendar was submitted by junior and senior secondary school students and their teachers.

SECSIP wants to express its deep gratitude to the Government of Australia and the European Union for the support provided to this initiative.

Vote blo iu, Voice blo iu



Empowered lives.  
Resilient nations



European Union

